
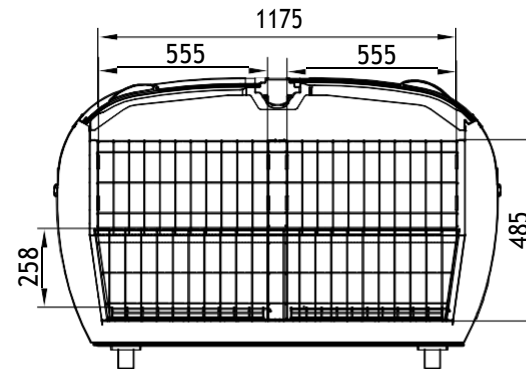
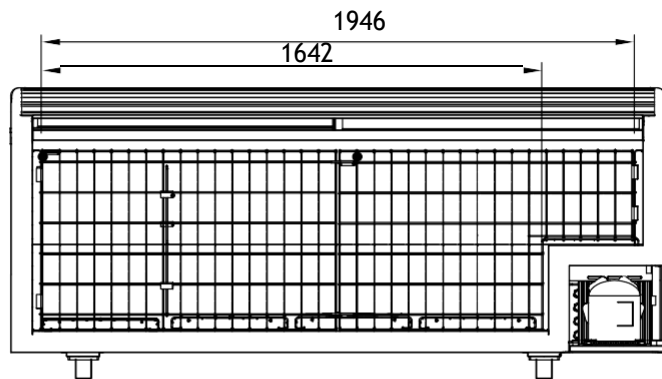
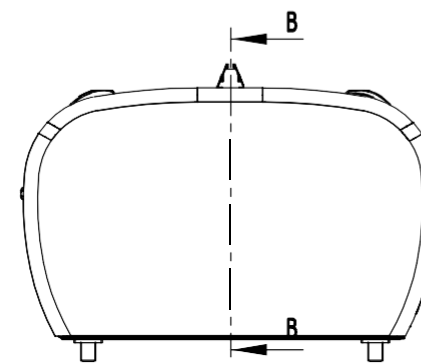
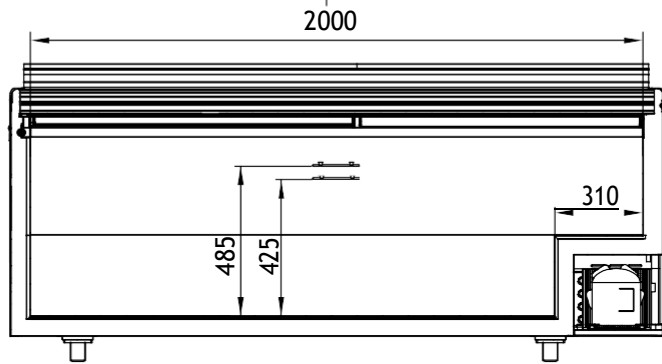
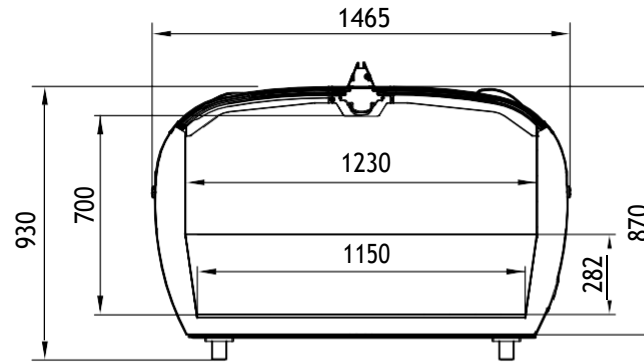
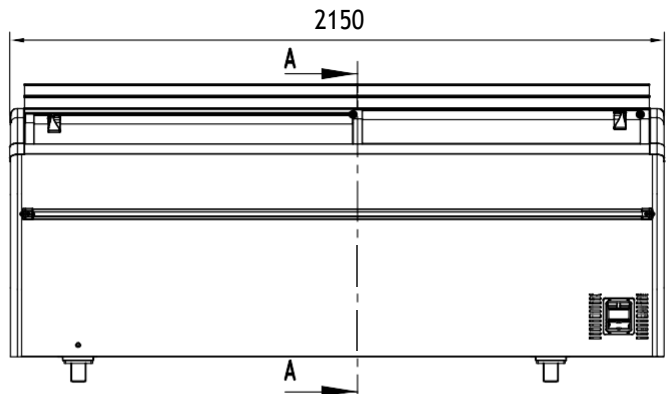


	RUBR.	DATA	<i>Exploded Drawing Model Dupla 2.2 DE - DEPN</i>
DES.	<i>Vitor</i>	03/06/19	
VISTO			
	ESCALA		
	DES.	A4. 17.06.007	
	REV.		



	RUBR.	DATA	MODELO EHCD2150DEHC					
DES.	<i>Vitor</i>	06/07/17						
VISTO								
	ESCALA			DES.				
				GONDOMAR	REV.			

SPARE PART LIST: DUPLA 2.2



EXPLODED DRAW NO.: A4.17.06.007

no.	Designation	Quantity	Code	DUPLA	DUPLA
				2.0 DR	2.0 DPN R
1	CUBA / TANK	1	---	●	●
2	TAMPA DE ESGOTO / EXTERNAL DRAIN PLUG	1	PL165	●	●
3	CAIXA PAINEL DE COMANDO / BOX CONTROL PANEL	1	PL124	●	●
4	PAINEL DE COMANDO / CONTROL PAINEL	1	PL126	●	●
5	INTERRUPTOR VERDE FLUOR F11.400L / GREEN SWITCH F11.400L	1	ME406	●	●
6	CAIXA F11.400 SEM TERMINAIS / BOX F11.400 WITHOUT TERMINAL CONTACTS	1	ME417	●	●
7	PLACA PORTA MARCAS / BRAND PLATE	1	PL109	●	●
8	CONTROLADOR ELECTRÓNICO / ELECTRONIC CONTROLLER DANFOSS AK CC210A	1	ME032	○	○
9	TAMPA P/ CONTROLADOR DANFOSS (CRISTAL) / TRANSPARENT PLASTIC COVER	1	PL125	●	●
10	PERFIL DE SUPORTE DOS PÉS / FEET PROFILE SUPPORT	2	---	●	●
11	PÉ PLÁSTICO 50 mm PN.644-2 / LEVELING FOOT 50 mm PN.644-2	4	PL149	●	●
12	PERFIL ANTI-CHOQUE FLEXÍVEL / FLEXIBLE PROTECTOR PROFILE	1	PF515	●	●
13	TERMINAL ANTI-CHOQUE / PROTECTIVE TERMINAL	4	PL565	●	●
14	PERFIL ANTI-CHOQUE FRONTAL / FRONTAL PROTECTOR PROFILE	2	PF514	●	●
15	DIVISÓRIA EM ARAME / WIRE DIVIDER	4	AR211	●	●
16	CAPA DO TRAVESSÃO CINZA / PLASTIC COVER	1	PL603	●	●
17	PERFIL EM ACRILICO / ACRYLIC PROFILE	1	PF961	●	●
18	PLACA DE LED 190 CM / LED LIGHT STRIP 190 CM	2	ME574	●	●
19	PERFIL TRAVESSÃO DUPLA / CENTRAL PROFILE DUPLA	1	PF962	●	●
20	TAMPAS DE VIDRO INFERIOR / LOWER SLIDING GLASS LIDS	2	TV271	●	●
21	TAMPAS DE VIDRO SUPERIOR / UPPER SLIDING GLASS LIDS	2	TV270	●	●
22	PERFIL EXP. PREÇOS DUPLO / DOUBLE PRICE HOLDER PROFILE	1	PI127	■	■
23	CONJUNTO GRELHAS DESCONGELAÇÃO / DEFROST WIRE GRID	1	AR225	●	●
24	CABO DE ALIMENTAÇÃO / COUNTRY DESTINATION POWER CORD	1	-	○	○
25	CABO DE ALIMENTAÇÃO EUROPEU / EURO POWER CORD	1	ME010	●	●
26	COMPRESSOR NUT70CAB / COMPRESOR NUT70CAB	2	ME182	●	○
26	COMPRESSOR FFU160UAX / COMPRESOR FFU160UAX	2	ME142	○	●
27	MOTOVENTILADOR / FAN MOTOR	2	ME430	●	●
28	CONDENSADOR TOBULAR ESQUERDO / LEFT CONDENSER	2	PI088	●	●
29	CONDENSADOR TOBULAR DIREITO / RIGHT CONDENSER	2	PI089	●	●
30	VÁLVULA DE DESCONGELAÇÃO / HOT GAS VALVE	2	ME576	●	●
31	BOBINE 230V-50Hz / HOT GAS VALVE COIL 230V-50Hz	2	ME575	●	●
32	FILTRO / FILTER	2	CC080	●	●
33	TRANSFORMADOR DE LED / LED TRANSFORMER	2	ME547	●	●
34	GRELHA PLÁSTICA PEQUENA / SMALL PLASTIC GRID 108x266mm	1	PL067	●	●
35	GRELHA PLÁSTICA GRANDE / BIG PLASTIC GRID 425x266mm	2	PL066	●	●

● Yes ○ No ■ Optional